

CLIENT:

Newcastle
Hospitals NHS
Foundation Trust

Introduction

This development at the Newcastle General Hospital, Campus for Ageing and Vitality provided a temporary Ophthalmology unit for the treatment and prevention of diseases of the eye. It was designed, manufactured, and completed ahead of schedule, during the COVID-19 outbreak.

Safe systems of work were utilised to ensure the protection of all on site, adhering to strict social distancing guidelines, undertaking regular risk assessments, and maintaining high levels of site hygiene. The complex nature of this project made it necessary for the installation works to progress on a live construction site, while maintaining access and egress from the new building.

Working in partnership with the Robertson Group on behalf of the Newcastle Hospitals NHS Foundation Trust, this project was successfully completed against ambitious deadlines.

Client brief

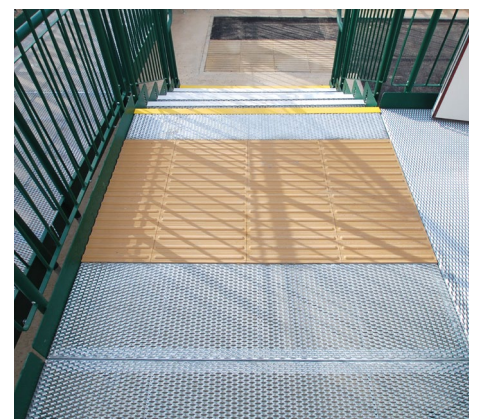
Extensive access solutions were required to all points of access and egress from the unit.

- a) Provide ramping and stepped access to the main entrance of the unit.
- b) Provide ramping and stepped access to the rear exits of the unit, to maintain a one way system.
- c) Ramping to the loading area of the unit where equipment and supplies could be brought into the hospital.



Main requirements and features

- **Balustrade:** This access solution was specified to be fully balustraded.
- **1100mm High Rails:** Installed at specified position on the platform sections, these rails provide additional safety and assurance.
- **Bespoke:** Due to the varied door reveals and recesses, bespoke threshold plates were manufactured to bridge the door reveals and provide a smooth transition for anyone using the ramps.
- **Highlighted Edges:** All level changes required 55mm highlighted edge strips, providing a visual aid to all users.
- **Hazard Warning Surface:** This was specified at certain areas of the platforms to provide a further visual aid to the users and warn of any "hazards" when approaching a ramp or step system.
- **Compliance:** Being a "public building" adhering to the latest regulations is of the utmost importance. Working alongside Robertson Group we were able to inform their own design considerations, creating a solution that was not only fit for purpose, but fully compliant.



Working in partnership with:



On behalf of:



Time on site to complete the installation

All modular ramp system components were installed in only 7 working days with the total time from inquiry to survey, design and installation taking just under 30 days.

Logistical considerations

As the site was situated in a busy city centre hospital, we were required to work in a high footfall environment with numerous contractors on site, and the plant and equipment. Prior to our installation, we needed to liaise with the scaffolding contractor on site due to there being significant scaffolding and obstructions to the area where the ramps were required.

Additional works

Once we approached the end of the project, we were requested by the main contractors and site manager to install door closers to all the doors on the exit ramp – this was requested as some of the doors opened close to our ramp handrails, and with out these closers, the doors could possibly hit the handrails and cause damage.

Once these were installed, we were able to proceed with an end of project brief and the new ophthalmic unit was opened to the general public the following week.

Project summary

All works were completed within exacting timescales and on a highly intricate site. We were pleased to be able to offer our products and services at such short notice, during the COVID-19 pandemic, helping patients at the Newcastle General Hospital and to the satisfaction of Robertson Group and the Newcastle NHS Foundation Trust.



10 YEAR WARRANTY

Easiaccess Limited
Liberty House
Federation Way
Lancaster Road, Dunston
Tyne and Wear, NE11 9JR
FREEPHONE: 0800 321 7430
E: info@easiaccess.co.uk
www.easiaccess.co.uk